

Graphics

C. T. Russell

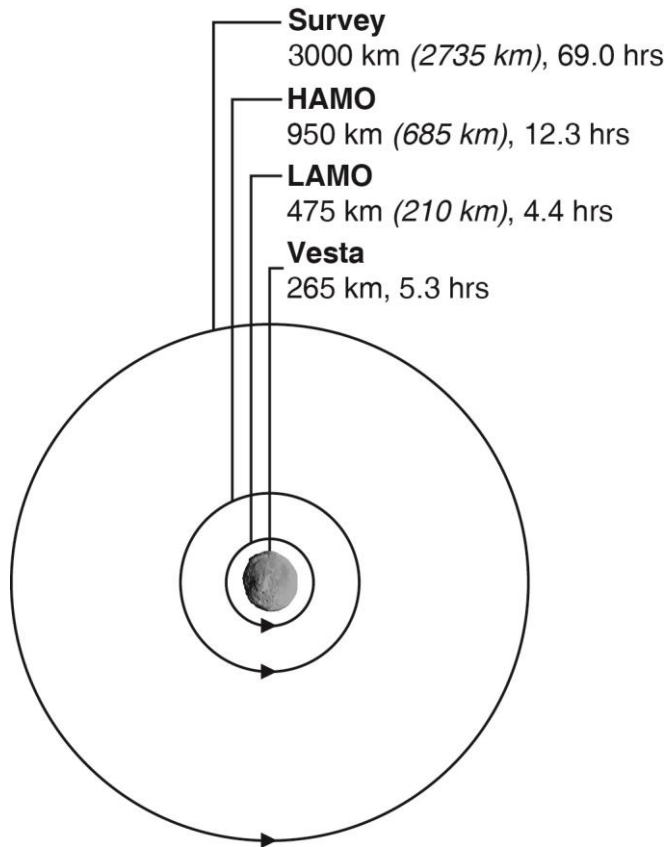
P.I. Dawn Mission to Vesta and Ceres

The Dawn Mission

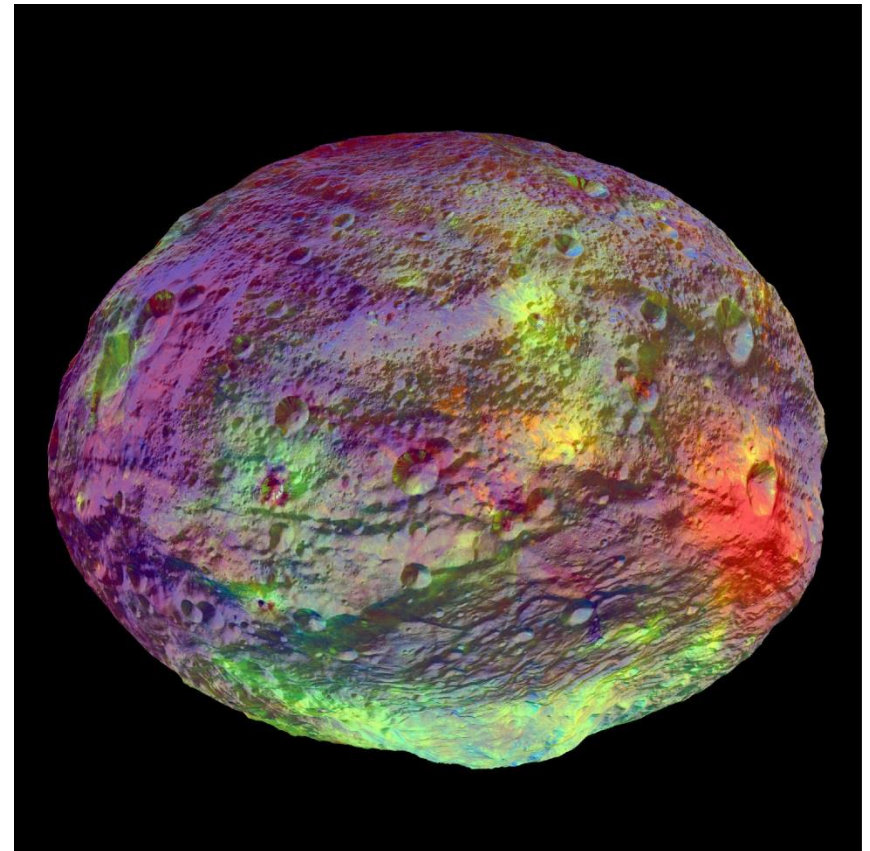


Dawn spacecraft leaving Earth on Sept.27, 2007

Mapping at Vesta



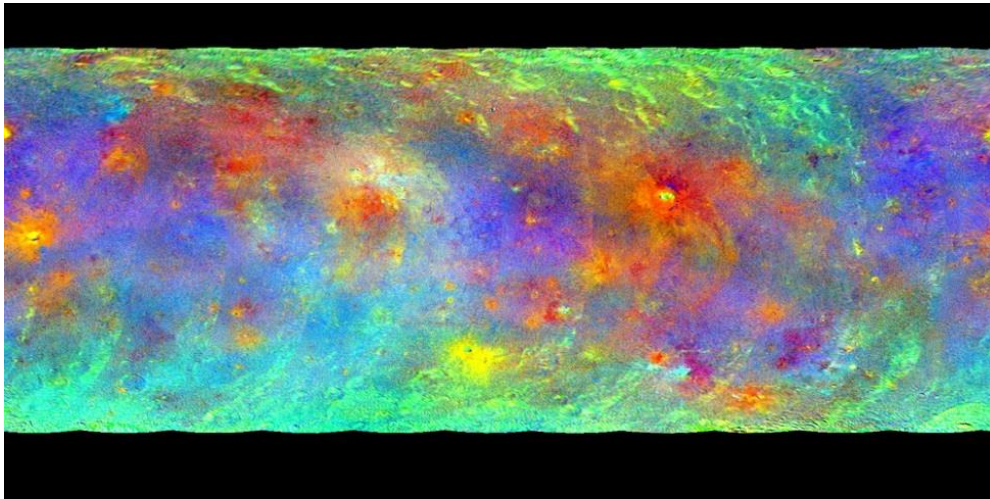
Mapping orbits used to study
Vesta, July 2011 – Sept.2012



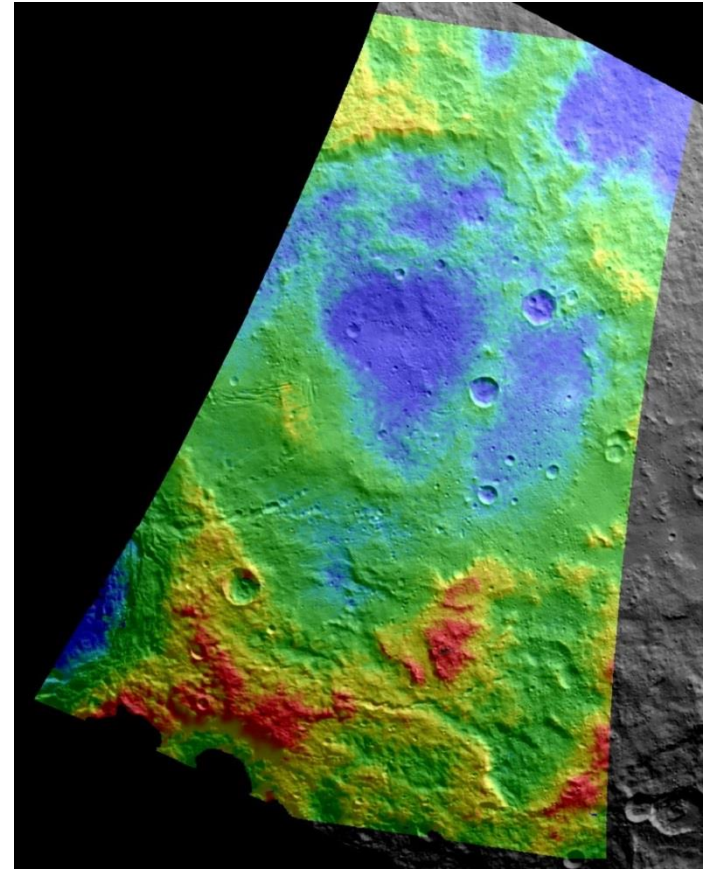
Vesta in Clementine colors

Vesta as seen in color ratios derived
from Dawn color filters

Mapping the Surface of Ceres

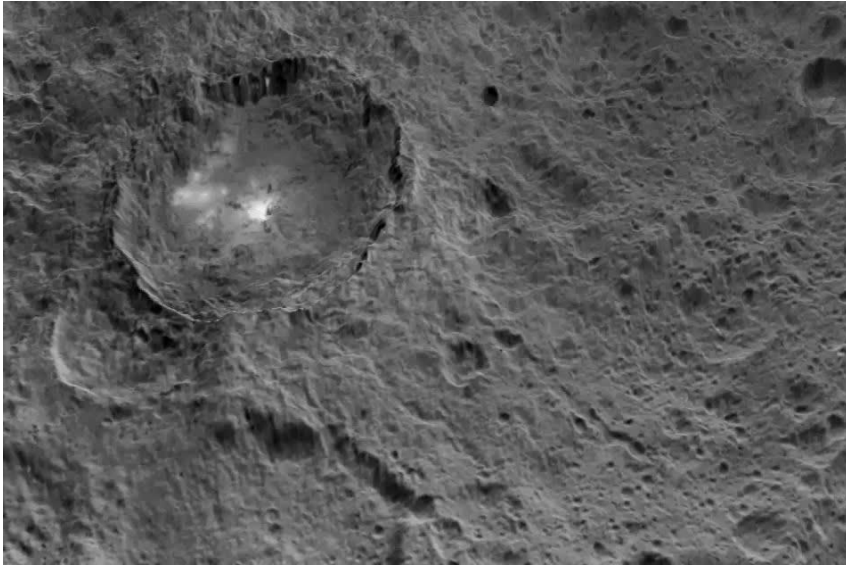


Color ratio image of Ceres illustrating the diversity of materials on Ceres



Color contour model of part of surface of Ceres

Surface Features on Ceres



Occator Crater with bright spots



Three mile high mountain on Ceres